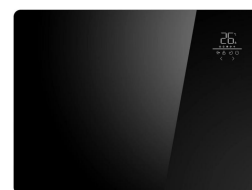


Glass Panel Heater



ATHP-RG



- Ultra Thin Design
- Overheat Safety Protection
- Large R Angle Design
- WiFi and APP
- Waterproof
- Wall Mounted

Glass panel heater-ATHP-RG Series

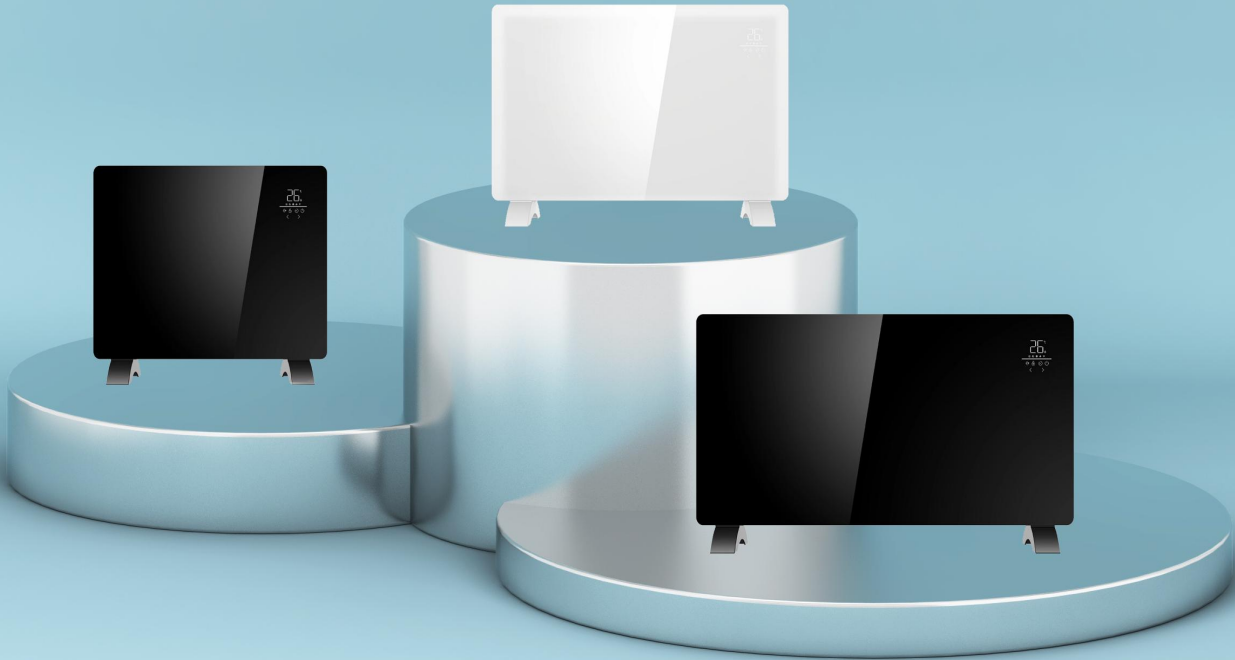
1. 3 heating mode;
2. Tempered glass panel;
3. X-shaped aluminum heating element, fast heating, long lifespan, no light, flavourless;
4. Semicircle LED display, 24h-timer, touch control switch;
5. Electronic sensor thermostat with Frost protection function (5-7°C);
6. Double overheat protection;
7. Room temperature sensor/adjustment 5-50°C;
8. Wall mounted and standing;
9. IP24;
10. WIFI control

SCREEN OPTION



Warranty & Approvals

Approvals	CE, GS, UKCA, EPR, ROHS
Warranty	2 Years



Dimensions

Model	ATHP -RG10	ATHP-RG15	ATHP-RG20
Power (w)	1000	1500	2000
Long(mm)	540	670	800
Width(mm)	80	80	80
High(mm)	385	385	385
Weight(kg)	4.6	5.4	6.2
Packaging details			
Long(mm)	555	685	845
Width(mm)	120	120	120
High(mm)	445	445	445
Weight(kg)	5.4	6.2	7.2
loading(40H Q)	2220	1805	1510

AntTec Group Co,Ltd

Technical Details

Controls	Touch LED control and WIFI&APP control
Construction	Tempered glass panel. Durable epoxy-polyester powder coated metal cas-ing with grille
Heating element	aluminum heating element Fast heating, long lifespan, flavourless
Installation	Wall bracket for easy fixing
Safety	Thermal cut-out. Overheat detection
IP Rating	IP24
Supply	1/N/PE ~220-240V,50/60Hz Class I, with earth wire
Power cord	Exposed 1.5m
Colour	White/Black/Antracit/Customized

